

Solomon R. Guggenheim Museum Archives A0071 Panza Collection Initiative (PCI) records

Please refer to the online finding aid (<https://www.guggenheim.org/finding-aids/collection/a0071>) or contact libraryandarchives@guggenheim.org for more information. All images are from the Digital Asset Management System. For museum employees, thumbnails are hyperlinked to the database. Click on them to be taken directly to the file in the DAM.

Relevant images may be found in other series:

Series 1. Advisory Committee Meetings, 2011-2017

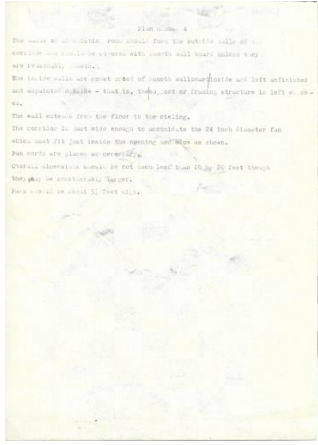
- Installation Views and Event Photographs
Numerous artworks or representative parts of artworks were assembled and displayed along with relevant documentation for each of the five two-day Advisory Committee meetings, which involved discussion and debate among a group of conservators, curators, and art historians.

Series 2. Object Lessons: The Panza Collection Initiative Symposium, 2019

- Installation Views
Images from the presentation of related art, documents, and working drawings from the Panza Collection, including works by Dan Flavin, Donald Judd, Robert Morris, and Bruce Nauman.

Series 3-10: Subseries: Artworks

- Artwork History
Detailed, illustrated account of the work's medium, production, display, provenance, and exhibition history. A selection of full-length artwork histories are available as digitalized content for each PCI case study, all other documents are available upon request.
- Artwork Views
Research material consulted by PCI team including past exhibition views, drawings, related artworks not in the Guggenheim collection, and other related documents. Detailed contextual information about these records can be found in the artwork history documents.
- Components Reclassified to Archives
In 2017 the PCI re-catalogued artwork related materials including drawings and components. These materials were reclassified and transferred to the archives. Detailed contextual information about these records can be found in the artwork history documents. Some images, particularly photographs, are duplicated under "artwork views."
- Drawings in the Guggenheim Collection
Drawings related to artwork in Guggenheim collection. As part of broader re-cataloging of drawings and other components undertaken by the PCI in 2017, these drawings were assigned their own object record in the museum's collection database.
- Paper-based Artwork Components
Documents that continue to be maintained in the museum's artwork storage and catalogued in the museum's collection database. These documents include certificates of authenticity, technical drawings, and other documents that originated with the artists. Some of this material is restricted.
- Technical Documentation
Images taken throughout the PCI project during in-depth examination of extant artworks. In most cases, detailed contextual information about these images can be found in the artwork history documents.



Description:

Copy of undated typewritten instructions by Nauman sent to Panza (ca. 1970), on the other side of ballpoint sketch. An identical page, without a sketch on reverse side, is cataloged as artwork component 92.4170.doc.3. Between the artwork component and drawing, it is unclear which page is the original and which is the photocopy.

In 2017, as part of broader re-cataloging of drawings and other components undertaken by the Panza Collection Initiative, this was assigned its own object record, linked as a child record in TMS to 92.4170 Two Fans Corridor (ratified by A&M Committee in 2018).

new object number: 92.4246

KEYWORDS: work on paper, Verso

ARTIST NAME: Bruce Nauman

TITLE: Untitled (Study for Two Fans Corridor) (verso, with instructions)

DATE OF ARTWORK | EXHIBITION | EVENT: 1970

ACCESSION NUMBER | UNIQUE IDENTIFIER: 92.4246

DEPARTMENT | PROJECT | COLLECTION: Panza Collection

PHOTOGRAPHER | CREATOR OF DIGITAL ASSET: Kristopher McKay

Author's Position: SRGM Photographer

Credit: Solomon R. Guggenheim Museum, New York Panza Collection, 1991

Rights: © [current year] Bruce Nauman/Artists Rights Society (ARS), New York



Description:

Bruce Nauman drawing of Two Fans Corridor; 1970

In 2017, as part of broader re-cataloging of drawings and other components undertaken by the Panza Collection Initiative, this was assigned its own object record, linked as a child record in TMS to 92.4170 Two Fans Corridor (ratified by A&M Committee in 2018).

New object number: 92.4246

KEYWORDS: work on paper

ARTIST NAME: Bruce Nauman

TITLE: Untitled (Study for Two Fans Corridor)

DATE OF ARTWORK | EXHIBITION | EVENT: 1970

ACCESSION NUMBER | UNIQUE IDENTIFIER: 92.4246

DEPARTMENT | PROJECT | COLLECTION: Panza Collection

Credit: Solomon R. Guggenheim Museum, New York Panza Collection, 1991

Rights: © [current year] Bruce Nauman/Artists Rights Society (ARS), New York