

Solomon R. Guggenheim Museum Archives A0071 Panza Collection Initiative (PCI) records

Please refer to the online finding aid (<https://www.guggenheim.org/finding-aids/collection/a0071>) or contact libraryandarchives@guggenheim.org for more information. All images are from the Digital Asset Management System. For museum employees, thumbnails are hyperlinked to the database. Click on them to be taken directly to the file in the DAM.

Relevant images may be found in other series:

Series 1. Advisory Committee Meetings, 2011-2017

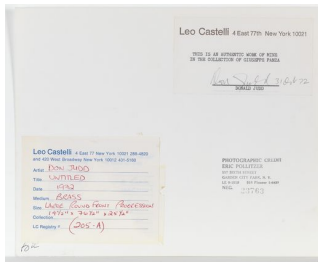
- Installation Views and Event Photographs
Numerous artworks or representative parts of artworks were assembled and displayed along with relevant documentation for each of the five two-day Advisory Committee meetings, which involved discussion and debate among a group of conservators, curators, and art historians.

Series 2. Object Lessons: The Panza Collection Initiative Symposium, 2019

- Installation Views
Images from the presentation of related art, documents, and working drawings from the Panza Collection, including works by Dan Flavin, Donald Judd, Robert Morris, and Bruce Nauman.

Series 3-10: Subseries: Artworks

- Artwork History
Detailed, illustrated account of the work's medium, production, display, provenance, and exhibition history. A selection of full-length artwork histories are available as digitalized content for each PCI case study, all other documents are available upon request.
- Artwork Views
Research material consulted by PCI team including past exhibition views, drawings, related artworks not in the Guggenheim collection, and other related documents. Detailed contextual information about these records can be found in the artwork history documents.
- Components Reclassified to Archives
In 2017 the PCI re-catalogued artwork related materials including drawings and components. These materials were reclassified and transferred to the archives. Detailed contextual information about these records can be found in the artwork history documents. Some images, particularly photographs, are duplicated under "artwork views."
- Drawings in the Guggenheim Collection
Drawings related to artwork in Guggenheim collection. As part of broader re-cataloging of drawings and other components undertaken by the PCI in 2017, these drawings were assigned their own object record in the museum's collection database.
- Paper-based Artwork Components
Documents that continue to be maintained in the museum's artwork storage and catalogued in the museum's collection database. These documents include certificates of authenticity, technical drawings, and other documents that originated with the artists. Some of this material is restricted.
- Technical Documentation
Images taken throughout the PCI project during in-depth examination of extant artworks. In most cases, detailed contextual information about these images can be found in the artwork history documents.



Description: Black and white photograph of 91.3717 Untitled, by photographer Eric Politzer. Verso has two Leo Castelli Gallery labels, one with a statement confirming the work's authenticity and its ownership by Panza, signed by Judd on 1972/10/31. 1 double sided sheet, verso.

KEYWORDS: Photograph,SRGM Archives

ARTIST NAME: Donald Judd

DEPARTMENT | PROJECT | COLLECTION: Panza Collection

PHOTOGRAPHER | CREATOR OF DIGITAL ASSET: Kristopher McKay

Author's Position: SRGM Photographer

SOURCE OR FORMAT OF ORIGINAL: digital capture of verso of print of photo by Eric Pollitzer

Credit: Solomon R. Guggenheim Foundation Archives, New York

Usage Terms: Please contact SRGM Library & Archives for permissions.



Description: Black and white photograph of 91.3717 Untitled, by photographer Eric Politzer. Verso has two Leo Castelli Gallery labels, one with a statement confirming the work's authenticity and its ownership by Panza, signed by Judd on 1972/10/31. 1 double sided sheet.

KEYWORDS: Photograph,SRGM Archives

ARTIST NAME: Donald Judd

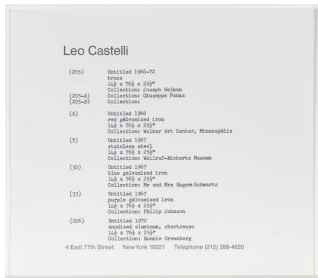
DEPARTMENT | PROJECT | COLLECTION: Panza Collection

PHOTOGRAPHER | CREATOR OF DIGITAL ASSET: Eric Pollitzer

SOURCE OR FORMAT OF ORIGINAL: digital capture by Kristopher McKay (SRGM Photography) of print of a photograph by Eric Pollitzer

Credit: Solomon R. Guggenheim Foundation Archives, New York

Usage Terms: Contact Eric Pollitzer estate and/or Castelli Gallery for permissions



Description: Artwork information for 91.3717 Untitled, typewritten on Leo Castelli Gallery letterhead, listing owners of related examples. 1 sheet, no verso.

KEYWORDS: SRGM Archives

ARTIST NAME: Donald Judd

DEPARTMENT | PROJECT | COLLECTION: Panza Collection

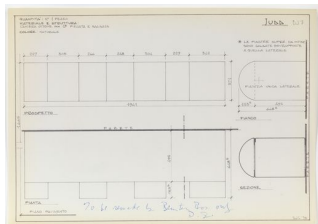
PHOTOGRAPHER | CREATOR OF DIGITAL ASSET: Kristopher McKay

Author's Position: SRGM Photographer

SOURCE OR FORMAT OF ORIGINAL: digital capture

Rights: © Solomon R. Guggenheim Foundation, New York. All Rights Reserved.

Usage Terms: Please contact SRGM Library & Archives for permissions.



Description: Construction plan for 91.3717 Untitled, dated 1975, prepared in Italy on Panza's behalf, even though work was never actually refabricated. With a handwritten note by Judd at the bottom, initialed by artist that reads: To be remade by Bernstein Bros. only. 1 sheet, no verso.

KEYWORDS: construction drawing,SRGM Archives

ARTIST NAME: Donald Judd

DEPARTMENT | PROJECT | COLLECTION: Panza Collection

PHOTOGRAPHER | CREATOR OF DIGITAL ASSET: Kristopher McKay

Author's Position: SRGM Photographer

SOURCE OR FORMAT OF ORIGINAL: digital capture

Rights: © Solomon R. Guggenheim Foundation, New York. All Rights Reserved.

Usage Terms: Please contact SRGM Library & Archives for permissions.